

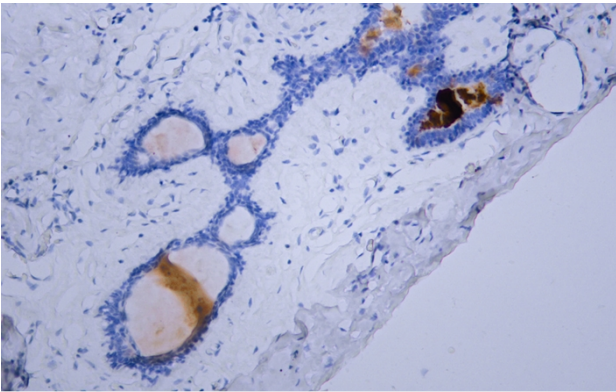


Mammaglobin mouse mAb(ABT079)

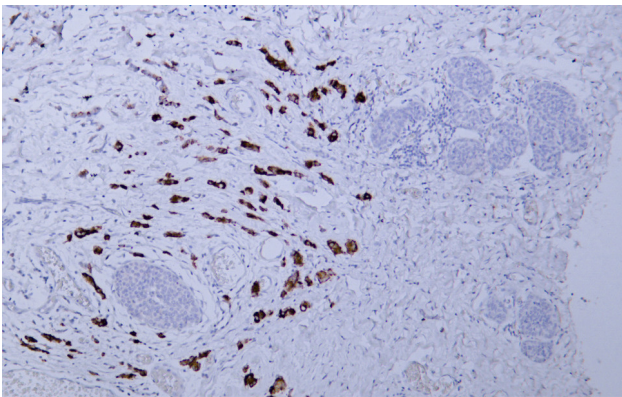
Catalog No	YP-Ab-15601
Isotype	IgG
Reactivity	Human
Applications	IHC;IF
Gene Name	SCGB2A2 MGB1 UGB2
Protein Name	Mammaglobin
Immunogen	Synthesized peptide derived from human Mammaglobin
Specificity	The antibody can specifically recognize human Mammaglobin protein.
Formulation	Liquid in PBS containing 50% glycerol, 0.5% BSA and 0.167% sodium azide.
Source	Mouse, Monoclonal/IgG1, Kappa
Purification	The antibody was affinity-purified from mouse ascites by affinity-chromatography using specific immunogen.
Dilution	IHC-p 1:100-500, IF 1:100-500
Concentration	1 mg/ml
Purity	≥90%
Storage Stability	-20°C/1 year
Synonyms	Mammaglobin-A (Mammaglobin-1;Secretoglobin family 2A member 2)
Observed Band	
Cell Pathway	Secreted .
Tissue Specificity	Mammary gland specific. Over-expressed in breast cancer.
Function	similarity:Belongs to the secretoglobin family. Lipophilin subfamily.,tissue specificity:Mammary gland specific. Over-expressed in breast cancer.,
Background	ERROR 42
matters needing attention	Avoid repeated freezing and thawing!
Usage suggestions	This product can be used in immunological reaction related experiments. For more information, please consult technical personnel.



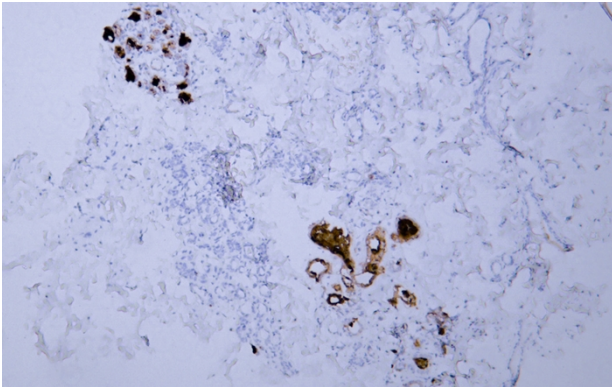
Products Images



Human breast tissue was stained with Anti-Mammaglobin (ABT079) Antibody



Human breast carcinoma tissue was stained with Anti-Mammaglobin (ABT079) Antibody



Human breast tissue was stained with Anti-Mammaglobin (ABT079) Antibody